

WELCOME!

+ PATRICK
EMMA
+ INCREDIBLE EDIBLE
THIS IS A WORKING SPACE

IN PERSON
NEW CAFE!
GUESTS

SUPPORT HUT
SAFER SPACES GUIDE
SPACES OF SHARED ENQUIRY

REFLECTING

HOW MIGHT WE GO BEYOND OTHERING?

AROUND SOCIALLY ENGAGED PRACTICE

AS SPACES WHERE PEOPLE GATHER
THE COMMONS

MADLINE T HALL
GROUNDING EXERCISE

FIONA WHELAN
NOTES ON LISTENING

THINKING ABOUT SYSTEMIC INEQUALITY

CARE
SOLIDARITY

EMBODIED

THE CONDITIONS FOR LISTENING

+ POWER IMBALANCES

EMPATHY
+ POLITICAL LISTENING

THIS HAPPENS BETWEEN PEOPLE

WHO I AM AFFECTS HOW I LISTEN

YOUNG SOOK CHOI
+ WENDI SIA

IN EVERY BITE OF THE EMPEROR + ecological grief

GRIEF MUST BE EXTENDED
COLLECTIVE INTERROGATION

LISTEN BEYOND THIS ROOM

BRINGING TOGETHER 4 SITES
MALAYSIA
VIETNAM
KOREA

WHAT DO I NEED TO CARRY WITH ME THROUGH THIS PROJECT?

WHAT IF?

THE GREAT CHAIN OF BEING



ST HELENS

THE LAND NEEDED FOR TRADITION

READING THE GROUND-BASED ON ETHICS

ME THROUGH THIS PROJECT?

A FORCEFUL INSTITUTIONAL GESTURE

WHAT LAW GOVERNS THE LAND + BY WHOM IS THIS RECOGNISED?

LANGUAGE

OWNERSHIP TAKE, USE + RETURN

THIS WORLD HAS MANY REALMS, EACH REALM HAS ITS LAWS

COSMOLOGY OF CARE
THE SEEN & UNSEEN
RESTORING THE BALANCE OF HUMAN + SPIRIT WORLDS

SHAMANIC RITUALS

CONTROL
DIFFERENT WAYS OF COMMUNICATING WITH SPIRITS

STORY

TELLING

WITH FOR ABOUT 2023 — CARE AND THE COMMONS



A
STORY
TELLING
WITH
YOUNG SOOK
CHOI

ILLUSTRATED BY GRACE COLLINS

RADHA D'SOUZA

WITH CONTRIBUTION FROM **SUNERA THOBANI**

land and people: divorce of the epoch



TAMIL AREA (OF SRI LANKA)



HOME LAND

WHAT IS LEGACY?

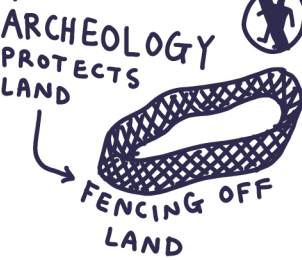


WHOSE HOMELAND IS THIS?

NO ACTION OF SUPPORT **CRUCIAL** RIGHTS

STIGMA TERRORISM BLOCKING MIGRANTS

MIGRATION



WE CAMPAIGN FOR A FUTURE

CHANGE OVER TIME

AND END UP WORKING BACK WITHIN FRAMEWORKS AT START!

THE ORIGINAL SIN OF CAPITALISM

EVICTION OF PEOPLE FROM LAND

LAND CENTRIC SOCIETY

ideology

THE DISCONNECT BETWEEN YOUR POSITION + THE REFUGEE

BUY

ARCHITECTURE OF RIGHTS

SEPARATION

NOT CITIZENSHIP BUT ABILITY TO BE SOMEWHERE

HOMELAND

SELL



COMMODITY CENTRIC SOCIETY

LABOUR MARKET



I AM NOT FREE IF YOU ARE NOT.

INDIGENOUS PEOPLE LOCKED OUT

THE STATE THE NATION

THE TRANSITION TO MODERNITY

+ THE EXILE OF THOSE THAT WONT CONFORM (+ PRODUCE LABOUR)



CANADA

THE STATE RECOGNISING + PARTNERING

RESERVATIONS



OUTSIDERS

RECLAIMING THE COMMONS = ABOLISH PRIVATE PROPERTY

ILLUSTRATED BY GRACE COLLINS

WHO GETS TO CLAIM THE COMMONS

Workshop ~
EAT YOUR VERB

TAEY IOHE

WHAT IS A GLOSSARY?

GLOSSARY

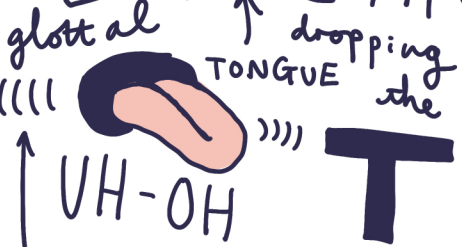
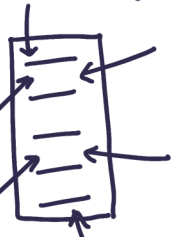


social tool

around climate justice

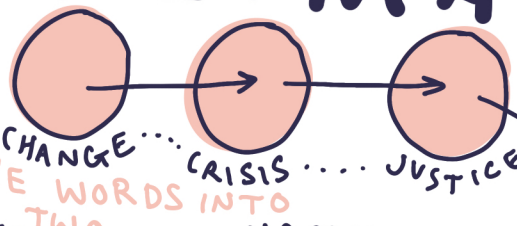


'CAME TO UK TO LEARN ENGLISH'
'I NEVER A COMFORTABLE N G U A G E'



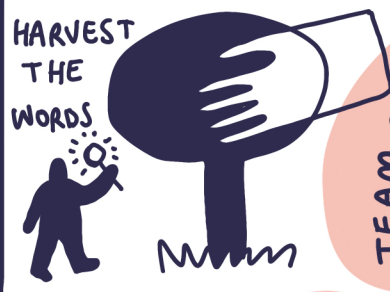
WHAT HAPPENS?
STOP + RELEASE

CLIMATE

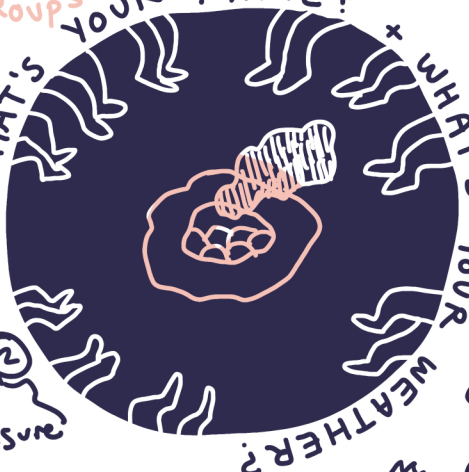


SORT THE WORDS INTO TWO GROUPS
CHANGE... CRISIS... JUSTICE...
WHAT'S YOUR NAME?

WHO'S STORY IS THIS?



TEAM ONE
cosy
light



WORDS GO TOGETHER?

"ANTHROPOCENE"

FEELS TURBULENT

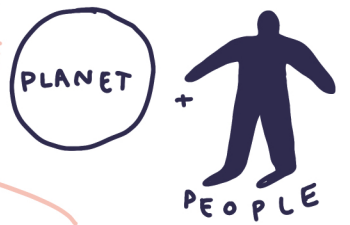
"WASTE"

YOU NEVER TRULY GET RID OF



"RESILIENT"

FEELING PRESSURED INTO BEING



EXCHANGE YOUR WORDS!

"DEVELOP"

IN NEED OF
MEASURING, PROGRESS + STATUS QUO



"GRIEF"
"GRATITUDE"
"COMMONS"
"PERSONHOOD"

DOES ANYONE WANT TO SWAP?

"DOMINION"

"DISPLACED"



NEXT ACTIVITY

TAEY IOHE

the words we use are constantly moving... CAN WE ARRANGE THE WORDS WE HAVE AROUND THIS?

EAT YOUR VERB



COBLE TO MAKE WITHOUT A PLAN

WE DIDN'T EVEN GET TO THIS!

WE ARE TRAPPED INSIDE AN ENGLISH LANGUAGE

WHAT IF EVERYTHING WAS A VERB?

WITH MANY NOUNS X PRONOUNS

TRANSUBSTANTIATION OF VERB

OUR WORDS ARE NEAT

OURS ARE TURBULENT

SEEING OTHER PEOPLE SPEAKING IT SWITCHED ON A LIGHT



GIFT OF LANGUAGE OF THE COLONISER

MOTHER TONGUE, RELATIONSHIP WITH MY CHILDREN

COBBLE TOGETHER

IT'S COMPLICATED BINARY MOTHERLAND MOTHEARTONGUE MOTHER EARTH FATHERLAND

IS THIS SALVAGEABLE? KIN MOTHER

LAND

PROBLEMS WICKED

COMPLEXITY

ARTICULATION

70'S DESIGN + CITY PLANNING

RESOLUTION

CHANGE

PROPERTY

NON HUMAN OTHERING

MORE THAN HUMAN

SUSTAINABILITY

JUSTIFICATION TRANSACTION

LANGUAGE MADE UP + USED AS LAW NO ONE'S LAND



CONTROL NOT SEEING OR RECOGNISING OTHERS CULTURE

NOTHING IS LOST OR CREATED, JUST TRANSFORMED

WE ARE WASTE WE CREATE WASTE + ENERGY



DENIAL

CONSUMPTION

RESISTANCE? RESILIENCE

DEBT

ANTHROPOCENE

DEVOID OF LIFE, CORRUPT

ECOLOGICAL DEBT CONTRACT OWING

RIGHT TO DEVELOP. BECAUSE NATURE IS RESILIENT.

ELECTRICAL RESILIENCE MATERIAL CALLING NATURE RESILIENT ALLOWS US TO EXPLOIT



NOT OPTIONAL ABSOLVES STATE RESPONSIBILITY

A DEMAND

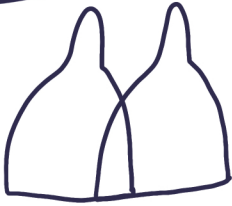
SOCIAL CARE SILENCING



50/50 ALONE ISN'T BALANCE

SHARING CIRCLE

I CONNECTED WITH RAHDA'S TALK PERSONALLY WITH MY MIXED HERITAGE



AMONG THE TREES

CALMING

CONNECTING WITH NATURE FEELS EASIER IN SUMMER

WE LOOKED AT BUTTERCUPS FOR ABOUT AN HOUR



JUST BEING BACK IN A SPACE WITH PEOPLE EMBRACE

PERMACULTURE

no answers, just better informed questions

HOMELAND

SETTLING NOT JUST GARDENING!

I'm excited to take this into my work WHAT'S THE FAIREST WAY TO DO THIS?

WITH LOTS OF PEOPLE!

SLOW PACE

writing I've been REALLY BUSY RECENTLY



HEARING OTHER PEOPLE



ARCHIVING



MUSEUM SPACE

Story telling

- ★ FAIR SHARE CARE
- ★ EARTH CARE
- ★ PEOPLE CARE

WIDER IMPLICATIONS

A WAY TO THINK ABOUT SOCIETY - let it be!

REGENERATIVE

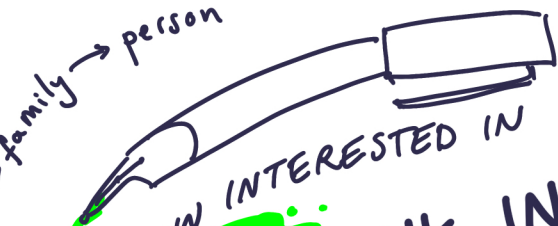
THE STORIES OF PARTICULAR PEOPLE

A DIFFERENT PERSPECTIVE

Zooming in continent → country → town → village

SCIENCE AS A PERSPECTIVE.

WHERE DO YOU FEEL GRIEF IN YOUR BODY?



I'M NOW INTERESTED IN GOETHE!

WE THINK IN SUCH FAST TERMS

I OFTEN APOLOGISE FOR THIS BEHAVIOUR.

she Spiritual as

last resort

THE PURPOSE OF GRIEF AS COLLECTIVE INTERROGATION

RECONCILIATION

NON LINEAR + CHAOTIC.